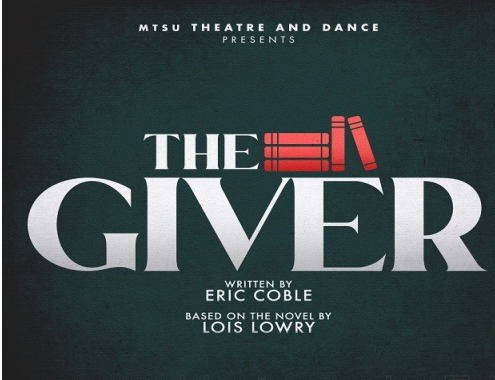
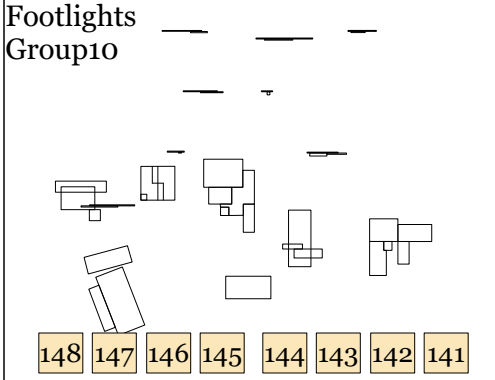
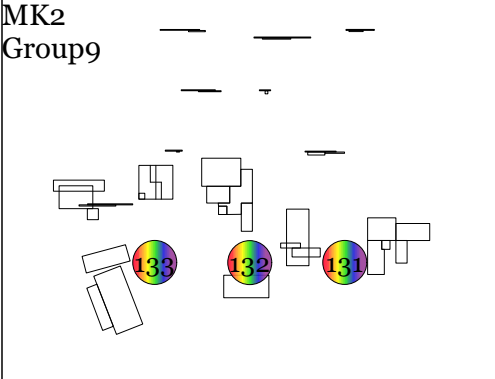
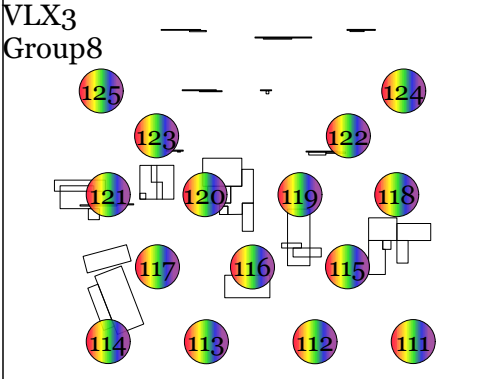
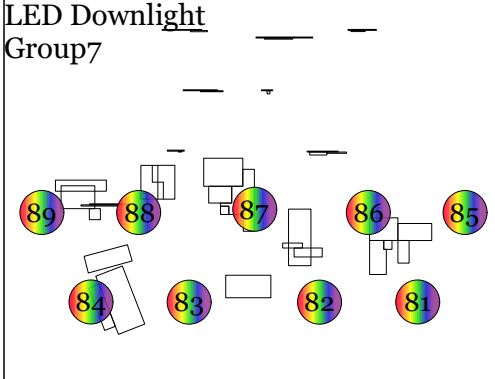
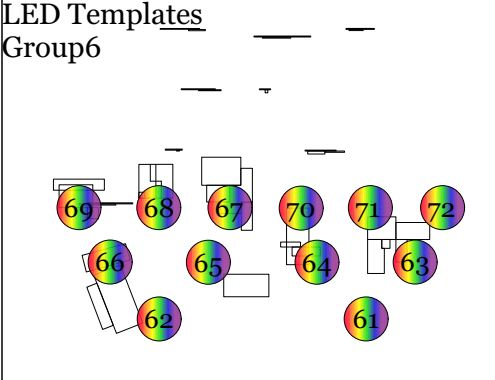
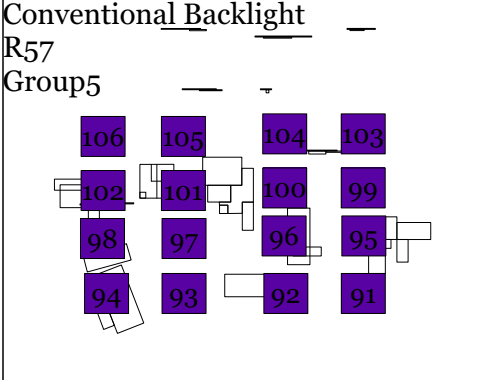
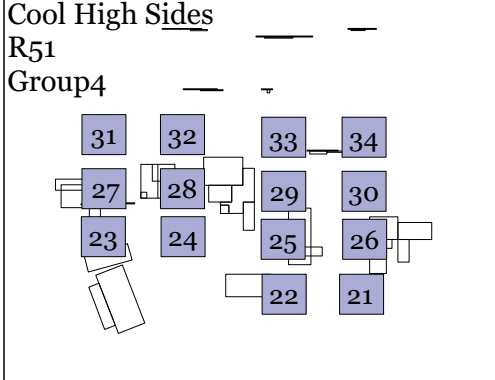


Color Palettes:

| | |
|---------------|-------------------|
| 1. Red | 21. Lt Red |
| 2. Orange | 22. Lt Orange |
| 3. Amber | 23. Lt Amber |
| 4. Green | 24. Lt Green |
| 5. Cyan | 25. Lt Cyan |
| 6. Blue Green | 26. Lt Blue Green |
| 7. Blue | 27. Lt Blue |
| 8. Lavender | 28. Lt Lavender |
| 9. Purple | 29. Lt Purple |
| 10. Magenta | 30. Lt Magenta |
| 11. Pink | 31. Lt Pink |
| 12. Hot Pink | 32. Lt Hot Pink |



The Giver
Magic Sheet
Middle Tennessee State University

Director: Alicia Fuss
Lighting Design: Lauren Thomas
Asst. Lighting Design: Stokeley Ellison, Eddie Shauwecker

The Giver

Master Cue Sheet

| Cue # | T | F/D | Pg | Call | Composition | LED | | | |
|------------------|-------|-----|----|--------------------------------------------------|--------------------------------------------------------------------------------------------------------------------------------------------------------------------------------------------------------------|------|------|-----|----|
| | | | | | | S4 | DL | VX3 | M2 |
| Preshow | | | | | | | | | |
| 1 | 3/5 | | 7 | House at Full | House Lights at Full. Cool and Warm High sides at medium intensity. LED textures at medium high intensity. LED downlight at medium low intensity. | CP8 | CP3 | | |
| 2 | 4/5 | | 7 | House at Half | House Lights fade to half. Cool and Warm High sides at medium intensity. LED textures at medium high intensity. LED downlight at medium low intensity. | CP8 | CP3 | | |
| 3 | 3/5 | | 7 | Blackout | House and House look fade to black | | | | |
| Act 1 | | | | | | | | | |
| Scene 1.1 | | | | | | | | | |
| 5 | 5/3 | | 7 | be released | Cool and Warm High Sides at medium high intensity. Front light at medium intensity. LED Downlight at Pale Blue at medium low intensity. Lavender Backlight at high intensity. LED Textures at low intensity. | CP31 | CP26 | | |
| 7 | 10/15 | | 8 | "he didn't know about." | | | | | |
| 9 | 2/3 | | 8 | "oh no" | | | | | |
| 10 | 4/5 | | 9 | "private <i>one</i> with Jonas" | Front light and Cool and Warm High Sides condense to table. Lavender backlight at medium intensity. LED Downlight at medium intensity. | CP31 | CP27 | | |
| 15 | 6/4 | | 11 | " <i>Fun</i> doesn't end when you become Twelve" | Cool and Warm High Sides at medium high intensity. Front light at medium intensity. LED Downlight at Pale Blue at medium low intensity. Lavender Backlight at high intensity. LED Textures at low intensity. | CP31 | CP26 | | |
| Scene 1.2 | | | | | | | | | |
| 20 | 4/3 | | 12 | "Mine <i>was</i> a bear" | Cool and Warm High Sides at medium intensity. Front light at medium intensity. LED Downlight at medium low intensity | | CP23 | | |
| 25 | 1/1 | af0 | 13 | "Disaster. Exactly" | Red Light Shift on apple (light Shift) | | | CP1 | |
| 30 | 0/0 | -- | 13 | --- | Cool and Warm High Sides at medium intensity. Front light at medium intensity. LED Downlight at medium low intensity | | CP23 | | |

The Giver

Master Cue Sheet

| Cue # | T | F | Pg | Call | Composition | LED | | | |
|------------------|-------|---|----|--------------------------------------------------------|--------------------------------------------------------------------------------------------------------------------------------------------------------------------------------------------------------------------------------------------|------|------|------|----|
| | | | | | | S4 | DL | VX3 | M2 |
| Scene 1.3 | | | | | | | | | |
| 45 | 5/7 | | 13 | "Back to <i>learning</i> " | Cool and Warm High Sides at medium high intensity. Front light at medium intensity. LED Downlight at Pale Blue at medium low intensity. Lavender Backlight at high intensity. LED Textures at low intensity. Warm amber downlight on Jonas | CP31 | CP26 | | |
| 50 | 5/4 | | 14 | " <i>Hppd</i> ' it says" | Warm Downlight fades out on Jonas | CP31 | CP26 | | |
| 53 | 10/15 | | 15 | "Is that what you want?" | Cool and Warm High Sides at medium high intensity. Front light at medium intensity. LED Downlight at Pale Blue at medium low intensity. Lavender Backlight at high intensity. LED Textures at low intensity. Warm amber downlight on Jonas | CP31 | CP26 | | |
| Scene 1.4 | | | | | | | | | |
| 55 | 5/7 | | 16 | " <i>Father</i> " | Lights go down on the home. Warm and Cool High Sides at medium low intensity. Front light at medium high intensity. LED Downlight at medium intensity. LED texture at medium high intensity | CP29 | CP23 | | |
| 60 | 4/5 | | 16 | " <i>Maybe</i> We'll see" | Warm and Cool High Sides at medium intensity. Front light at medium intensity. LED Downlight at medium low intensity. LED Texture at medium intensity. Lavender Backlight at medium intensity | CP27 | CP28 | CP23 | |
| Scene 1.5 | | | | | | | | | |
| 65 | 7/8 | | 18 | " Answer by the <i>time</i> you're in here" | Cool and Warm High Sides at medium high intensity. Front light at medium intensity. LED Downlight at Pale Blue at medium low intensity. Lavender Backlight at high intensity. LED Textures at low intensity. | CP31 | CP26 | | |
| 75 | 5/7 | | 20 | "So you don't have to speak one <i>far</i> being late" | Cool and Warm High Sides at medium high intensity. Front light at medium intensity. LED Downlight at medium intensity. | CP31 | CP27 | | |

The Giver

Master Cue Sheet

| Cue # | T | F/D | Pg | Call | Composition | LED | | | |
|------------------|------------|-----|----|-------------------------------------------------------------|--------------------------------------------------------------------------------------------------------------------------------------------------------------------------------------------------------------------------------|------|------|------|----|
| | | | | | | S4 | DL | VX3 | M2 |
| Scene 1.6 | | | | | | | | | |
| 80 | 5/7 | | 21 | "I'm already <i>forgetting</i> it" | Cool and Warm High Sides at medium high intensity. Front light at medium intensity. LED Downlight at medium intensity. LED Texture at medium low intensity | CP26 | CP23 | | |
| Scene 1.7 | | | | | | | | | |
| 85 | 4/5 | | 22 | "We're all going to get just the right <i>assignments</i> " | Cool and Warm High Sides at medium intensity. Front light at medium intensity. LED Texture at medium low intensity. Lavender downlight at medium low intensity. LED Downlight at medium low intensity. | CP28 | CP23 | | |
| Scene 1.8 | | | | | | | | | |
| 90 | 5/3 | | 23 | "Everyone-- arrange by <i>number</i> --scoot! Scoot!" | Front light at medium low intensity. Cool and Warm High Sides at medium intensity. LED Downlight at low intensity. LED Texture at medium intensity | CP31 | CP23 | | |
| 95 | 4/3 | | 23 | "I just need <i>to</i> keep breathing" | Front light at medium low intensity. Cool and Warm High Sides at medium intensity. LED Downlight at low intensity. LED Texture at medium intensity. Special on Chief at medium high intensity | CP31 | CP27 | CP23 | |
| Scene 1.9 | | | | | | | | | |
| 105 | 1/2 1/2 | | 24 | "Five. <i>Six</i> " | Red flashes over the family (take flash out; light shift) | CP8 | CP1 | | |
| 120 | 2/3 | | 25 | "Thirteen, <i>Fourteen</i> " | Front light at low intensity. Cool and Warm High Sides at medium low intensity. Special on Jonas in white. Lavender backlight at medium intensity. LED Downlight at medium low intensity. LED Texture at medium low intensity. | CP31 | CP27 | CP23 | |
| 125 | 4/3 | | 25 | " <i>Eighteen</i> , Asher?" | Special come back up on Chief Elder | CP31 | CP27 | | |
| 145 | 2/3 | | 26 | " <i>Please</i> join me" | Special on Jonas goes out. Front light at medium low intensity. Cool and Warm High Sides at medium intensity | | CP28 | | |
| 150 | 2/3 | | 27 | "We have had one <i>Receiver</i> for a very long time" | Front light at medium intensity. Cool and Warm High Sides at medium intensity. LED Downlight at medium intensity. Special on The Giver | CP27 | CP28 | | |

The Giver

Master Cue Sheet

| Cue # | T | F/D | Pg | Call | Composition | LED | | | |
|-------------------|------------|-----|----|------------------------------------------------------------|-------------------------------------------------------------------------------------------------------------------------------------------------------------------------------------------------------------------------|------|------|------|-----|
| | | | | | | S4 | DL | VX3 | M2 |
| 160 | 1/2 1/2 | af3 | 27 | "The Receiver calls it the Capacity to See <i>Beyond</i> " | Flash of color on the audience. Front light at medium intensity. Cool and Warm High Sides at medium intensity. LED Downlight at medium high intensity. LED Texture at medium intensity | CP1 | CP8 | | |
| 165 | 1/1 | -- | 28 | --- | Back to low tinted colors. | CP27 | CP28 | | |
| 170 | 6/4 | | 28 | "We thank you for <i>your</i> childhood" | Front light at medium low intensity. Warm and Cool High Sides at medium low intensity. Lavender Downlight at medium intensity. LED Downlight at medium intensity. LED Texture at medium low intensity. Special on Jonas | CP12 | CP1 | | |
| 175 | 4/3 | | 28 | The second to last Jonas | Front light at medium high intensity. Warm and Cool High Sides at medium intensity. LED Downlight at medium intensity. Lavender Backlight at medium high intensity. | | CP23 | | |
| Scene 1.10 | | | | | | | | | |
| 185 | 4/7 | | 29 | " <i>We'll</i> talk at home" | Front light at medium intensity. Cool and Warm High Sides at medium high intensity. LED Downlight at medium intensity. LED Texture at medium low intensity | CP31 | CP23 | | |
| Scene 1.11 | | | | | | | | | |
| 190 | 2/3 | | 29 | "I know" | Lights dim around Jonas. Front light at medium low intensity. Warm and Cool High Side at medium low intensity. LED Downlight at medium intensity. Special on Jonas and Giver. | CP10 | CP7 | | |
| 193 | 5/6 | DB | 29 | Giver Crosses Jonas | Specials on Jonas, Giver, and Fiona. Foot light at medium intensity. LEDs medium intensity. | CP7 | | CP23 | CP7 |
| 195 | 4/3 | | 30 | "Eight: <i>you</i> may lie" | Front light at medium intensity. Cool and Warm High Sides at medium high intensity. LED Downlight at medium intensity. LED Texture at medium low intensity | CP31 | CP23 | | |
| 197 | | | 30 | "I'd like that" | | CP29 | | CP28 | |

The Giver

Master Cue Sheet

| Cue # | T | F/D | Pg | Call | Composition | LED | | | |
|-------------------|-------|-----|----|-----------------------------------------------------------------|--------------------------------------------------------------------------------------------------------------------------------------------------------------------------------------------------------|------|------|------|-----|
| | | | | | | S4 | DL | VX3 | M2 |
| 200 | 15/20 | | 30 | Lights up on library | Front light at medium low intensity. Warm and Cool High Sides at medium intensity. LED Downlight at medium low intensity. LED Texture at medium intensity. Lavender Downlight at medium low intensity. | CP29 | CP23 | | |
| Scene 1.12 | | | | | | | | | |
| 205 | 5/3 | | 32 | "I am going to transmit the <i>memory</i> of snow" | Special on Jonas. Front light at medium low intensity. Warm and Cool High Sides at low intensity. LED Downlight at medium intensity. | CP9 | | CP5 | CP7 |
| 210 | 2/1 | | 33 | "Runners! Speed! Sled <i>downhill</i> " | Front light at medium low intensity. Warm and Cool High Sides at medium intensity. LED Downlight at medium low intensity. LED Texture at medium intensity. Lavender Downlight at medium low intensity. | CP29 | CP23 | | |
| 215 | 5/3 | | 34 | "And this time I'm not going to tell you <i>the</i> name of it" | Special on Jonas. Front light at medium low intensity. Warm and Cool High Sides at low intensity. LED Downlight at medium intensity. | | CP3 | CP11 | |
| 220 | 4/5 | | 34 | " <i>Sunshine</i> " | Front light at medium low intensity. Warm and Cool High Sides at medium intensity. LED Downlight at medium low intensity. LED Texture at medium intensity. Lavender Downlight at medium low intensity. | CP29 | CP23 | | |
| 225 | 5/3 | D4 | 35 | "I think I have enough energy for <i>one</i> more transmission" | Special on Jonas. Front light at medium low intensity. Warm and Cool High Sides at low intensity. LED Downlight at medium intensity. | | CP3 | CP1 | |
| 230 | 2/1 | | 35 | "Ouch. <i>Owwwww</i> " | Front light at medium low intensity. Warm and Cool High Sides at medium intensity. LED Downlight at medium low intensity. LED Texture at medium intensity. Lavender Downlight at medium low intensity. | CP29 | CP23 | | |
| 235 | 5/4 | D5 | 36 | "Call me <i>The</i> Giver" | Cool and Warm High Sides at medium high intensity. Front light at medium intensity. LED Downlight at medium intensity. LED Texture at medium low intensity. | CP31 | CP25 | | |

The Giver

Master Cue Sheet

| Cue # | T | F/D | Pg | Call | Composition | LED | | | |
|-------------------|-----|-----|----|-----------------------------------------------------------|--------------------------------------------------------------------------------------------------------------------------------------------------------------------------------------------------------|------|------|------|-----|
| | | | | | | S4 | DL | VX3 | M2 |
| Scene 1.13 | | | | | | | | | |
| 240 | 4/3 | | 36 | "Don't forget your <i>pills</i> though" | Front light at medium intensity. Warm and Cool High Sides at medium high intensity. LED Texture at medium intensity. LED Downlight at medium intensity. | CP31 | CP23 | | |
| Scene 1.14 | | | | | | | | | |
| 245 | 1/1 | af1 | 37 | "The same as for small <i>children</i> " | Red flash on Fiona's hair | | | CP1 | |
| 250 | 0/0 | | 37 | --- | Front light at medium intensity. Warm and Cool High Sides at medium high intensity. LED Texture at medium intensity. LED Downlight at medium intensity. | CP31 | CP23 | | |
| Scene 1.15 | | | | | | | | | |
| 255 | 5/6 | D4 | 37 | " <i>Me</i> too" | Front light at medium low intensity. Warm and Cool High Sides at medium intensity. LED Downlight at medium low intensity. LED Texture at medium intensity. Lavender Downlight at medium low intensity. | CP29 | | CP23 | |
| 260 | 6/3 | | 38 | "Just the <i>beginning</i> of it." | Front light at medium low intensity. Warm and Cool High Sides at low intensity. LED Downlight at medium intensity. Lavender Downlight at medium intensity | CP9 | | CP5 | CP7 |
| 265 | 0/0 | | 38 | "Look to the bookcase, the very top row of <i>books</i> " | Front light at medium low intensity. Warm and Cool High Sides at low intensity. LED Downlight at medium intensity. Lavender Downlight at medium intensity. Red flash across the bookcase. | CP29 | | CP23 | |
| 275 | 4/3 | | 39 | "I'm going to give you a memory <i>of</i> a rainbow" | Front light at medium intensity. Warm and Cool High Sides at medium high intensity. LED Downlight at medium intensity. LED Texture at medium intensity. | CP31 | CP26 | | |
| Scene 1.16 | | | | | | | | | |
| 280 | 3/2 | | 40 | "And we should let the gardening <i>crew</i> know" | Front light at medium low intensity. Warm and Cool High Sides at medium intensity. LED Downlight at medium low intensity. LED Texture at medium intensity. Lavender Downlight at medium low intensity. | CP31 | CP23 | | |
| 283 | | | | "It's called an elephant." | | CP28 | | CP9 | |

The Giver

Master Cue Sheet

| Cue # | T | F/D | Pg | Call | Composition | LED | | | |
|--------------|-----|-----|----|-----------------------------------------|--------------------------------------------------------------------------------------------------------------------------------------------------------------------------------------------------------------|------|------|------|----|
| | | | | | | S4 | DL | VX3 | M2 |
| 285 | 4/3 | D2 | 41 | Jonas sits up | Cool and Warm High Sides at medium high intensity. Front light at medium intensity. LED Downlight at Pale Blue at medium low intensity. Lavender Backlight at high intensity. LED Textures at low intensity. | CP31 | CP26 | | |
| Scene 1.17 | | | | | | | | | |
| 290 | 4/5 | | 42 | "Cept <i>your</i> apology" | Front light at medium low intensity. Warm and Cool High Sides at medium intensity. LED Downlight at medium low intensity. LED Texture at medium intensity. Lavender Downlight at medium low intensity. | CP31 | | CP23 | |
| Scene 1.18 | | | | | | | | | |
| 295 | 2/2 | | 43 | "And a <i>sled</i> " | Special on Jonas. Front light at medium low intensity. Warm and Cool High Sides at low intensity. LED Downlight at medium intensity. | | CP5 | | |
| 300 | 4/2 | | 43 | "The hill it's" | Red wash grows. Front light at medium low intensity. Warm and Cool High Sides at low intensity. LED Downlight at medium intensity. | | CP5 | CP1 | |
| 305 | 1/2 | | 43 | "AHHH! My <i>leg</i> " | Front light at medium low intensity. Warm and Cool High Sides at medium intensity. LED Downlight at medium low intensity. LED Texture at medium intensity. Lavender Downlight at medium low intensity. | CP31 | | CP23 | |
| 310 | 4/3 | | 44 | "It will get much...much <i>worse</i> " | Blackout | | | | |
| Intermission | | | | | | | | | |
| 315 | 3 | | | House at Full | House Lights at full. Warm and Cool High Sides at medium intensity. LED Downlight at medium high intensity. LED Texture at medium high intensity. Lavender Downlight at medium intensity. | CP8 | CP3 | | |
| 320 | 3 | | | House to Half | House Lights at half. Warm and Cool High Sides at medium intensity. LED Downlight at medium high intensity. LED Texture at medium high intensity. Lavender Downlight at medium intensity. | CP8 | CP3 | | |
| 325 | 3 | | | Blackout | Blackout | | | | |

The Giver

Master Cue Sheet

| Que # | T | F/D | Pg | Call | Composition | LED | | | |
|-----------------|-----|-----|----|-----------------------------------------------------|--------------------------------------------------------------------------------------------------------------------------------------------------------------------------------------------------------|------|------|------|----|
| | | | | | | S4 | DL | VX3 | M2 |
| Act 2 | | | | | | | | | |
| Scene 21 | | | | | | | | | |
| 330 | 3/1 | | 45 | Lights up | Front light at medium high intensity. Cool and Warm High Sides at medium intensity. LED Textures at medium low intensity. LED Downlight at medium intensity. Special on Jonas | CP31 | CP26 | | |
| 335 | 4/3 | D3 | 45 | "I'm going <i>to</i> bed" | Front light at medium low intensity. Warm and Cool High Sides at medium intensity. LED Downlight at medium low intensity. LED Texture at medium intensity. Lavender Downlight at medium low intensity. | CP11 | CP23 | | |
| Scene 22 | | | | | | | | | |
| 340 | 3/2 | | 45 | "They have never know <i>pain</i> " | Front light at low intensity, Warm and Cool High Sides at medium high intensity. LED Downlight at medium high intensity. LED Texture at medium intensity. Special on Jonas | CP7 | CP6 | | |
| 345 | 2/1 | | 45 | "On a blue-green lake <i>either</i> " | Front light at low intensity, Warm and Cool High Sides at medium high intensity. LED Downlight at medium high intensity. LED Texture at medium intensity. Special on Jonas | CP10 | CP3 | CP12 | |
| 347 | 2/1 | | 45 | "Or an orange sunset behind the <i>mountain</i> . " | Front light at medium low intensity. Warm and Cool High Sides at medium intensity. LED Downlight at medium low intensity. | | CP3 | CP1 | |
| 350 | 2/1 | | 45 | " <i>Aah</i> " | Front light at medium low intensity. Warm and Cool High Sides at medium intensity. LED Downlight at medium low intensity. LED Texture at medium intensity. Lavender Downlight at medium low intensity. | CP31 | CP23 | | |
| 353 | | | | "Back and back" | transition lighting | CP27 | | CP29 | |

The Giver

Master Cue Sheet

| Cue # | T | F/D | Pg | Call | Composition | LED | | | |
|------------------|-----|-----|----|----------------------------------------------------------------|--------------------------------------------------------------------------------------------------------------------------------------------------------------------------------------------------------|------|------|-----|----|
| | | | | | | S4 | DL | VX3 | M2 |
| Scene 2.3 | | | | | | | | | |
| 360 | 7/8 | | 48 | "Right. All right, Jonas, lets try it <i>just</i> for tonight" | Lights condense on Jonas and Gabriel. Front light at medium low intensity. Warm and Cool High Sides at medium intensity. LED Downlight at medium low intensity. Special on the two | CP28 | CP27 | | |
| 365 | 3/2 | | 48 | "Oh no, not already, Gabe <i>don't</i> " | Special on Gabe and Jonas. Front light at low intensity. Warm and Cool High sides at medium intensity. LED Downlight at medium intensity | | CP6 | | |
| 370 | 2/1 | | 48 | "You're taking it, you <i>can't</i> " | Lights condense on Jonas and Gabriel. Front light at medium low intensity. Warm and Cool High Sides at medium intensity. LED Downlight at medium low intensity. Special on the two | CP28 | CP27 | | |
| 375 | 6/4 | D4 | 49 | "I can't...this shouldn't... <i>Oh</i> no" | Front light at medium low intensity. Warm and Cool High Sides at medium intensity. LED Downlight at medium low intensity. LED Texture at medium intensity. Lavender Downlight at medium low intensity. | CP31 | CP23 | | |
| Scene 2.4 | | | | | | | | | |
| 380 | 4/3 | | 49 | "Put you hands on me. Quickly. <i>Now</i> " | Special on Jonas. LED Downlight at medium low intensity. LED Texture at medium intensity. | CP12 | CP1 | | |
| 385 | 2/3 | | 49 | "Help. Help. <i>Help</i> " | Front light at medium low intensity. Warm and Cool High Sides at medium intensity. LED Downlight at medium low intensity. LED Texture at medium intensity. Lavender Downlight at medium low intensity. | CP31 | CP23 | | |
| 390 | 4/3 | | 50 | "No I'm happy to give it <i>to</i> you" | LED Downlight at medium high intensity. LED Texture at medium intensity. Warm and Cool High Sides at medium intensity. | CP27 | | CP9 | |
| 395 | 3/2 | | 51 | " <i>Family</i> " | Front light at medium low intensity. Warm and Cool High Sides at medium intensity. LED Downlight at medium low intensity. LED Texture at medium intensity. Lavender Downlight at medium low intensity. | CP31 | CP23 | | |

The Giver

Master Cue Sheet

| Cue # | T | F/D | Pg | Call | Composition | LED | | | |
|------------------|----------|-----|----|--------------------------------------------------------|-------------------------------------------------------------------------------------------------------------------------------------------------------------------------------|------|------|------|----|
| | | | | | | S4 | DL | VX3 | M2 |
| 400 | 6/4 | D4 | 52 | "And that you could be <i>my</i> grandparent" | Front light at medium high intensity. Cool and Warm High Sides at medium intensity. LED Textures at medium low intensity. LED Downlight at medium intensity. Special on Jonas | CP31 | CP26 | | |
| Scene 2.5 | | | | | | | | | |
| 405 | 4/3 | | 52 | "I'll take him! It's <i>all</i> right" | Special on Jonas and Gabe. Front light at low intensity. Warm and Cool High Sides at medium intensity. LED Downlight at medium intensity. | CP4 | CP6 | | |
| 410 | 3/2 | | 53 | "And grass and <i>sunlight</i> " | Front light at medium high intensity. Cool and Warm High Sides at medium intensity. LED Textures at medium low intensity. LED Downlight at medium intensity. Special on Jonas | | CP6 | | |
| 415 | 4/1 | | 53 | "There could <i>be</i> love" | Front light at medium high intensity. Cool and Warm High Sides at medium intensity. LED Textures at medium low intensity. LED Downlight at medium intensity. | CP27 | CP26 | | |
| 420 | 4/5 | | | "Have a good <i>day</i> " | Front light at medium intensity. Warm and Cool High Sides at medium high intensity. LED Downlight at medium intensity. LED Texture at medium intensity | CP7 | | CP9 | |
| 423 | 2/3 | | 53 | Jonas throw the pill | Front light at medium intensity. Warm and Cool High Sides at medium high intensity. LED Downlight at medium intensity. LED Texture at medium intensity | CP28 | CP23 | | |
| Scene 2.6 | | | | | | | | | |
| 425 | 8/6 8 | D5 | 54 | "You're hit, Jonas! Pow! You're <i>hit</i> again" | Red wash grows across stage. Front Light at medium low intensity. Warm and Cool High Sides at medium intensity. Special on Jonas | CP12 | CP1 | | |
| 430 | 2/3 | -- | 54 | --- | Front light at medium intensity. Warm and Cool High Sides at medium high intensity. LED Downlight at medium intensity. LED Texture at medium intensity | CP28 | CP23 | | |
| 435 | 6/4 | | 55 | "Do you want to go for a ride along <i>the</i> river?" | Front light at medium high intensity. Cool and Warm High Sides at medium intensity. LED Textures at medium low intensity. LED Downlight at medium intensity. | CP31 | CP26 | | |
| 437 | | | | "Lily! It's bedtime" | | CP8 | | CP11 | |

The Giver

Master Cue Sheet

| Cue # | T | F/D | Pg | Call | Composition | LED | | | |
|-----------|-----|-----|----|---------------------------------------|----------------------------------------------------------------------------------------------------------------------------------------------------------------------------------------------------------------------------|------|------|-----|------|
| | | | | | | S4 | DL | VX3 | M2 |
| 440 | 4/3 | | 56 | Jonas picks up book and sits | Front light at medium low intensity. Warm and Cool High Sides at medium intensity. LED Downlight at medium low intensity. LED Texture at medium intensity. Lavender Downlight at medium low intensity. | CP11 | CP23 | | |
| Scene 28 | | | | | | | | | |
| 445 | 4/3 | | 57 | "Intelligent, <i>eager</i> to learn" | Front light at medium low intensity. Warm and Cool High Sides at medium intensity. LED Downlight at medium low intensity. LED Texture at medium intensity. Lavender Downlight at medium low intensity. Special on Rosemary | CP11 | CP23 | | CP28 |
| 450 | 5/4 | | 58 | "But the times of laughter were gone" | Front light at medium low intensity. Warm and Cool High Sides at medium intensity. LED Downlight at medium low intensity. LED Texture at medium intensity. Lavender Downlight at medium low intensity. | CP11 | CP23 | | |
| 455 | 1/1 | | 60 | "All right, <i>then</i> " | Special on Jonas like TV Screen | CP11 | CP23 | | |
| Scene 29 | | | | | | | | | |
| 460 | 1/1 | | 61 | "Bye-bye, little <i>guy</i> " | Front light at medium low intensity. Warm and Cool High Sides at medium intensity. LED Downlight at medium low intensity. LED Texture at medium intensity. Lavender Downlight at medium low intensity. | CP11 | CP23 | | |
| Scene 211 | | | | | | | | | |
| 475 | 5/4 | D6 | 65 | "Her name <i>was</i> Rosemary" | Front light at medium high intensity. Cool and Warm High Sides at medium intensity. LED Textures at medium low intensity. LED Downlight at medium intensity. | CP31 | CP26 | | |

The Giver

Master Cue Sheet

| Cue # | T | F/D | Pg | Call | Composition | LED | | | |
|------------------|-----|------|----|-----------------------------------------------------|--------------------------------------------------------------------------------------------------------------------------------------------------------------------------------------------------------|------|------|------|------|
| | | | | | | S4 | DL | VX3 | M2 |
| Scene 212 | | | | | | | | | |
| 480 | 7/3 | D2/3 | 66 | "Gabe! Bye-bye! <i>Bye</i> -bye" | Front light at medium low intensity. Warm and Cool High Sides at medium intensity. LED Downlight at medium low intensity. LED Texture at medium intensity. Lavender Downlight at medium low intensity. | CP11 | CP23 | | |
| 485 | 4/3 | | 67 | "Shh" | Special on Jonas. Special on Giver. LED Downlight at medium low intensity. LED Texture at medium intensity. Lavender Downlight at medium intensity | CP7 | CP6 | | |
| 487 | 7/3 | D2/3 | 67 | Jonas crosses to bike | Special on Jonas. Special on Giver. LED Downlight at medium low intensity. LED Texture at medium intensity. Lavender Downlight at medium intensity | CP7 | | CP26 | CP23 |
| Scene 213 | | | | | | | | | |
| 490 | 3/2 | | 67 | " <i>Search</i> plane" | Special on Jonas. Special on Giver. LED Downlight at medium low intensity. Lavender Downlight at medium intensity | CP7 | | CP26 | CP23 |
| 495 | 1/1 | af2 | 68 | " <i>Gabe</i> , Gabe" | Flash of color | CP7 | | CP5 | |
| 500 | 2/1 | -- | 68 | -- | Special on Jonas. Special on Giver. LED Downlight at medium low intensity. Lavender Downlight at medium intensity | CP7 | | CP26 | CP23 |
| 505 | 5/4 | | 68 | Giver walks back | Special on the Giver fades out. LED Downlight at medium intensity. LED Texture at medium low intensity. | CP7 | | CP26 | |
| Scene 214 | | | | | | | | | |
| 510 | 6/4 | D10 | 68 | "Though not much. We better keep moving" | LED Downlight at medium high intensity. LED Texture at medium intensity | CP28 | CP6 | | |
| 511 | 4/1 | D5 | 69 | "The birds" | LED Downlight at medium high intensity. LED Texture at medium intensity. Warm and Cool High Sides at medium intensity. | CP28 | CP6 | | |
| 512 | 5/5 | D5 | 69 | "You see the <i>wildflowers</i> " | LED Downlight at medium high intensity. LED Texture at medium intensity. Warm and Cool High Sides at medium intensity. | CP28 | CP6 | | |

The Giver

Master Cue Sheet

| Cue # | T | F/D | Pg | Call | Composition | LED | | | |
|--------------------|-----|-----|----|---------------------------------------------------------|---------------------------------------------------------------------------------------------------------------------------------------------------------------|------|-----|------|-----|
| | | | | | | S4 | DL | VX3 | M2 |
| 513 | 6/4 | D6 | 69 | "And the <i>hills</i> " | LED Downlight at medium high intensity. LED Texture at medium intensity. Warm and Cool High Sides at medium intensity. | CP28 | CP6 | | |
| 514 | 5/4 | D4 | 69 | "I wonder what's going on <i>back</i> in the Community" | LED Downlight at medium high intensity. LED Texture at medium intensity. Warm and Cool High Sides at medium intensity. | CP28 | CP6 | | |
| 523 | 7/5 | D4 | 69 | "They're <i>almost</i> gone" | LED Downlight at medium high intensity. LED Texture at medium intensity. Warm and Cool High Sides at medium high intensity. | CP7 | CP6 | | |
| 535 | 5/2 | | 70 | "I'm <i>sorry</i> " | LED Downlight at medium low intensity. LED Texture at medium high intensity. Warm and Cool High Sides at medium low intensity. Lights up on Giver and Family. | CP7 | CP6 | CP28 | CP3 |
| 540 | 3/2 | | 70 | "Gabe, / still have my own memories" | Lights go down on Family and Giver. | CP7 | CP6 | | |
| 541 | 2/1 | | 70 | "We're <i>almost</i> there" | Lights shift Downstage Center. LED Texture goes out. | | CP6 | | |
| 543 | 7/8 | | 70 | Jonas gets the sled | Front light at medium low intensity. Warm and Cool High Sides at medium intensity. LED Downlight at medium low intensity. | | CP6 | | |
| 555 | 3/1 | | 71 | Jonas walks upstage | Blackout | | | | |
| End of Show | | | | | | | | | |
| 560 | 3/4 | | 71 | Curtain Call | Front light at medium high intensity. Warm and Cool High Sides at medium high intensity. LED Downlight and Texture at medium intensity. | CP11 | CP8 | | |
| 565 | 3/1 | | 71 | Blackout | Blackout | | | | |
| 570 | | | | | House Lights at Full. Back to preshow look | CP8 | CP3 | | |